

Creative Peptides Inc.

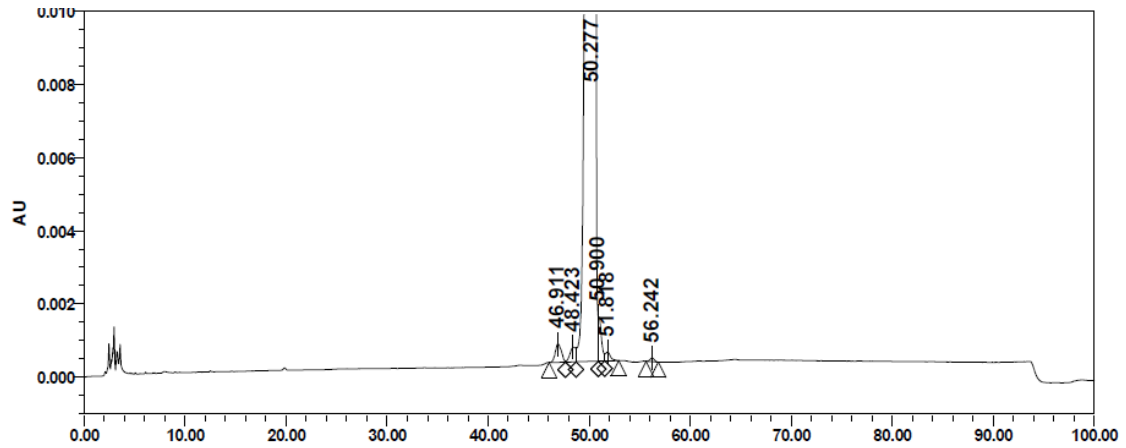
Liraglutide

Product Name	Liraglutide		
CAT#	10-101-59	Batch No.	P080-160108
M.F/Formula	$C_{172}H_{265}N_{43}O_{51}$	Molecular Weight	3751.29
Batch size	151 g	MFG. Date	01/18/2016
Retest Date	01/17/2018		
Sequence	HAEGTFTSDVSSYLEGQAAK [N-(1-oxohexadecyl)-L-γ -glutamyl] EFI AWLVRGRG		
TESTING ITEM	SPECIFICATION	RESULT	
Appearance	White to off white powder	Conforms	
MS	192.17±1	193.14 by MS [M+H] ⁺	
Identification HPLC	Retention time is same with the reference substance	Conforms	
Purity (HPLC)	≥95.0%	98.65% (HPLC, 220 nm, C18, linear gradient)	
Related substances (HPLC)	Any other impurity: ≤1.0% Total impurities: ≤4.0%	0.48% 1.35%	
Water (Karl Fischer)	≤7.0%	5.6%	
Store at	Aliquot the product after reconstitution to avoid repeated freezing/thawing cycles. Reconstitute in PBS or water. Reconstituted protein/peptide can be stored at 4°C for a limited period of time. The lyophilized peptide remains stable for up to 2 year when stored at -20°C.		
Conclusion	Correspond		

QA:
Sharon Lee
QC:
Paulo Park
Date:
Jan. 18, 2016

HPLC REPORT

Sample: Liraglutide
 Lot. No. P080-160108
 Volume: 10 μ l
 Wavelength: 220 nm
 Flow rate: 1.0 ml/min



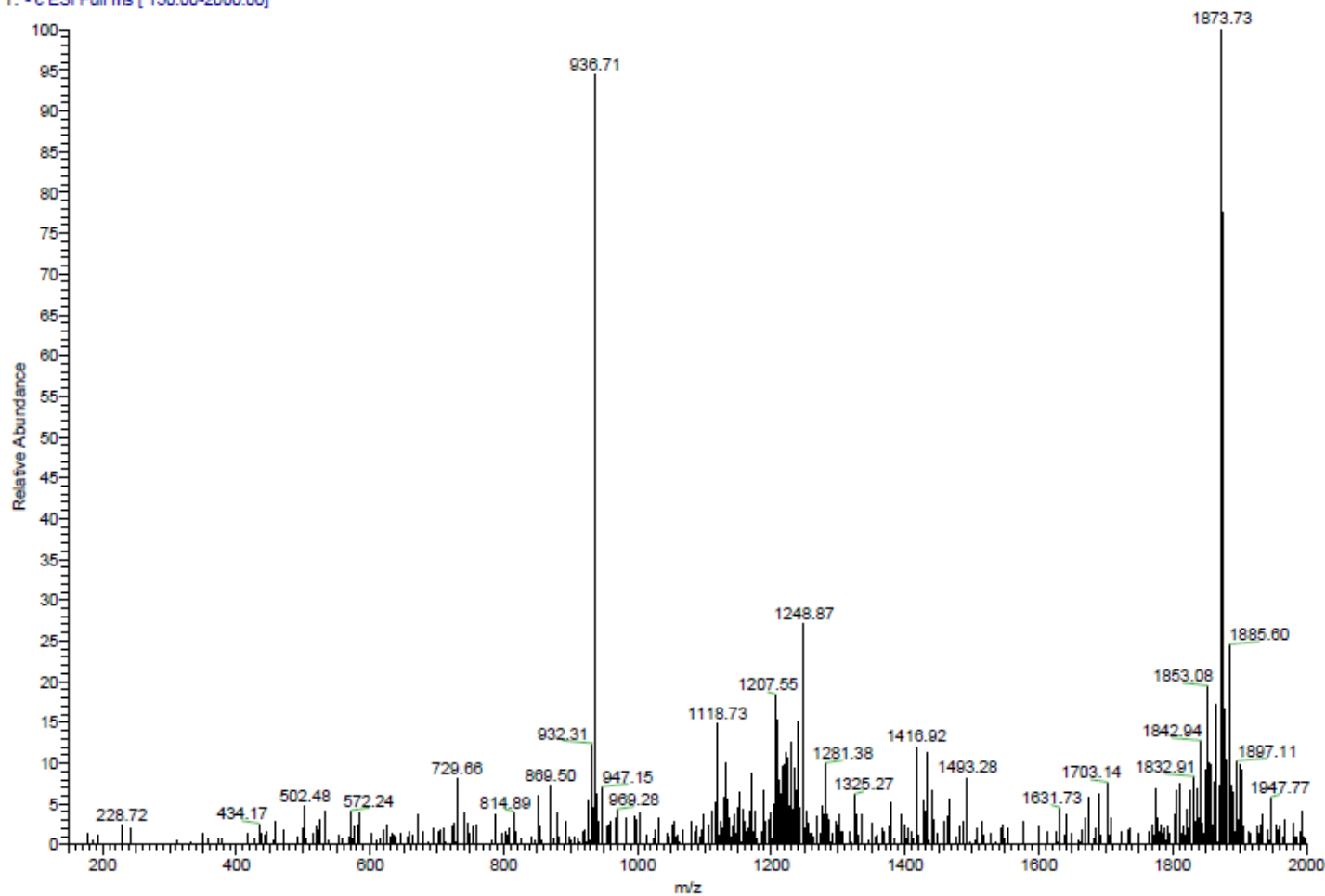
Peak No.	Ret Time	Area	Height	Conc.
1	46.911	20905	226	0.38
2	48.423	15823	512	0.29
3	50.277	5468300	328	98.65
4	50.900	26620	394	0.48
5	51.818	8498	158605	0.15
6	56.242	2976	1544	0.05
Total				100.00

MASS SPECTROMETRY REPORT

E:\Data\PO80\160108

6/17/2016 2:13:59 PM

160108 #47 RT: 1.11 AV: 1 NL: 1.47E7
T: - c ESI Full ms [150.00-2000.00]



Creative Peptides Inc. All rights reserved.
45-16 Ramsey Road Shirley, NY 11967, USA
Tel: 631-624-4882 Fax: 631-614-7828
E-mail: info@Creative-peptides.com
www.Creative-peptides.com